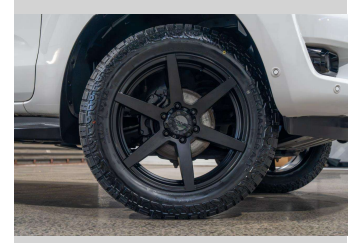
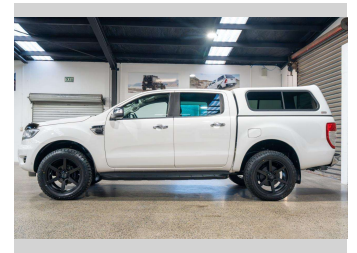


# 2021 Ford Ranger XLT DOUBLE CAB W/S 2



**Purchase Price** **\$32,990**  
Includes GST, Registration & Licensing

Finance may be available on this vehicle. Ask one of our friendly staff for more information.



Gain peace of mind with Mechanical Breakdown Insurance. **Ask us how.**



**Top features**  
None Listed

**Body Style**  
4 door, Ute

**Odometer**  
108,750 km

**Engine**  
1996 cc, Internal Combustion

**Fuel Type**  
Diesel


**Transmission**  
Automatic

**Wheels**  
-

**VIN**  
MPBUMFF60LX318818

**Interior**  
Black

**Safety**



Based on 2025 VSRR rating

**Reg No.**  
NJM442

**Ext Colour**  
White


**History**  
NZ New, 2 owners

**Seats**  
5 seats

**CO2 Emissions**  
★★★★☆  
205 grams/km

**Energy Economy**  
★★★★☆  
Annual fuel cost of \$3,250  
7.8L per 100km

Cost per year is an estimate based on diesel price of \$2.00 per litre and an average distance of 14000 km. Includes Road User Charges (RUC). Emissions and Energy Economy figures standardised to 3P WLTP.



Scan this QR code for more info  
Stock ID: 3628